

EXPLODED VIEW & PARTS LISTING

Air Operated Double Diaphragm Pump

Model: DP-80BF[x]-HD (XDP)
Cast Iron Series



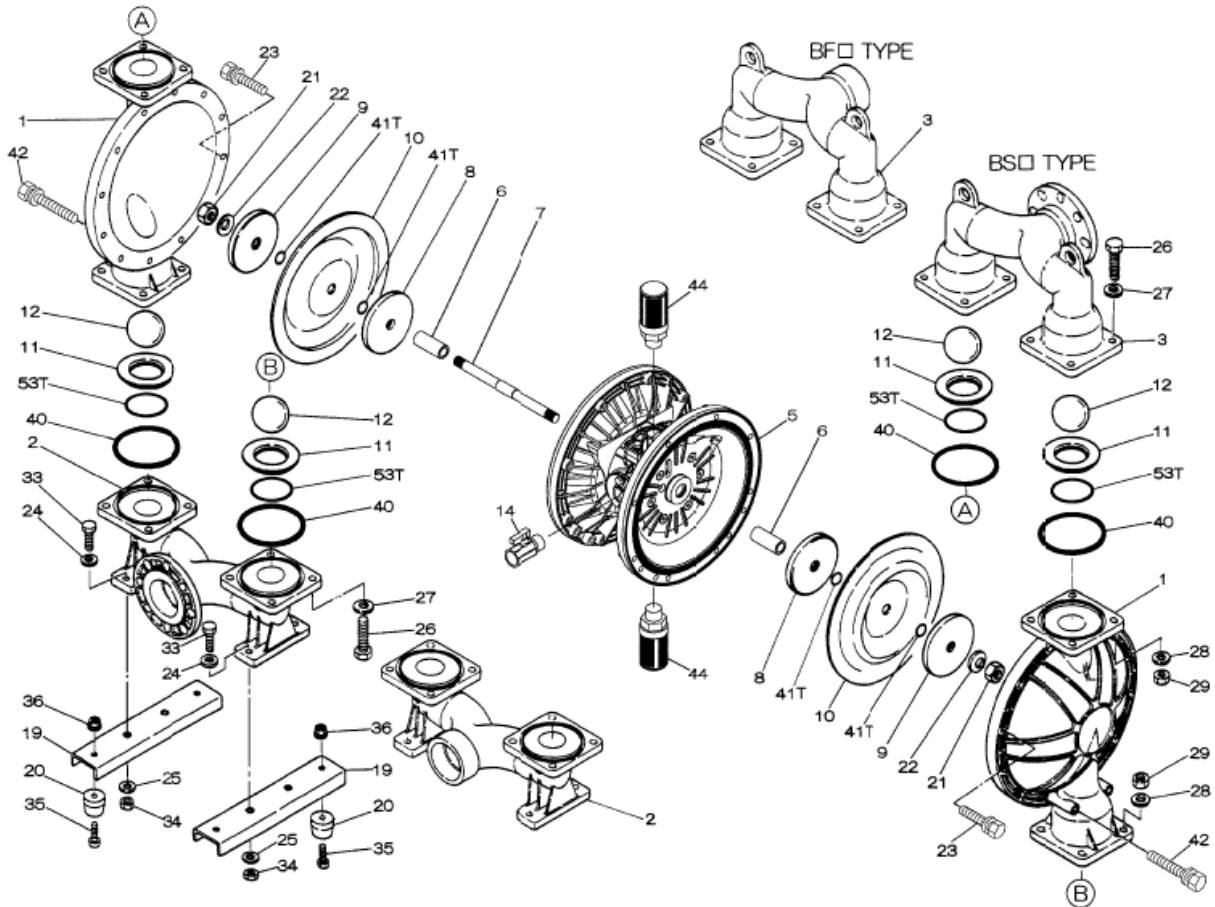
To Purchase:

- 800-990-7867
- sales@yamadapump.com
- Find My Rep

More Information:

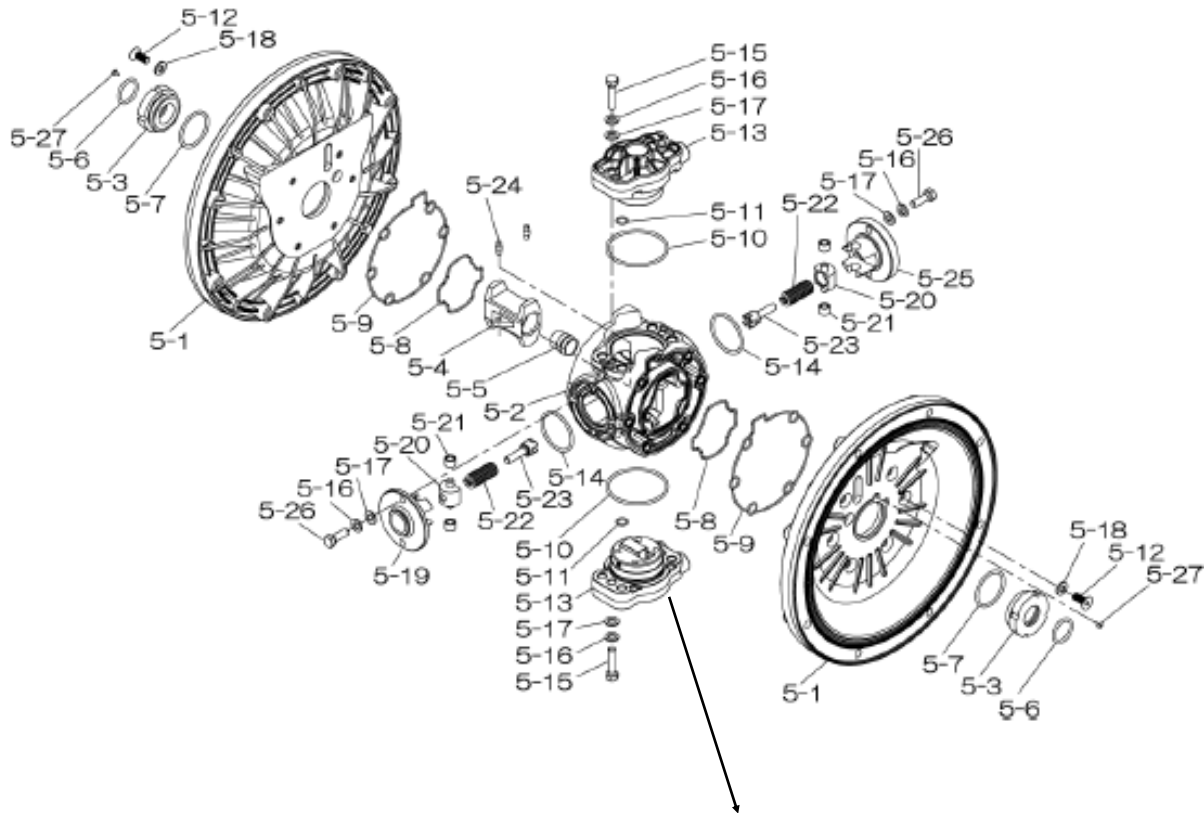
- YouTube: @yamadapump
- yamadapump.com
- Data Sheets | CAD Drawings | Manuals Literature | BOM | Performance Curves

Trial Program

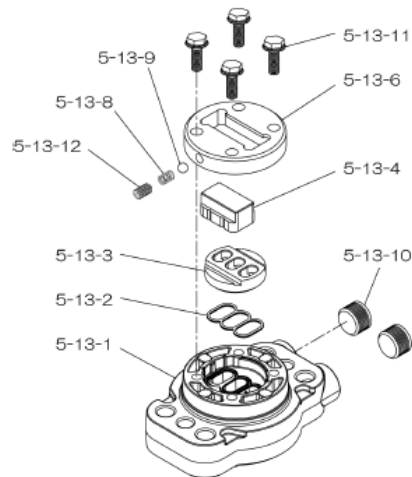


Air Operated Double Diaphragm Pump

804780 Center Body Assembly



804784 Valve Body Assembly



Air Operated Double Diaphragm Pump

| | DP-80BFC-HD | DP-80BFN-HD | DP-80BFS-HD | DP-80BFE-HD | DP-80BFH-HD | DP-80BFV-HD | | | |
|----------|-------------|-------------|-------------|-------------|-------------|-------------|---------------------------|------|---------|
| | 854531 | 854532 | 854537 | 854533 | 854536 | 854534 | | | |
| REF. No. | PART No. | PART No. | PART No. | PART No. | PART No. | PART No. | DESCRIPTION | QTY. | REORDER |
| 1 | 713158 | 713158 | 713158 | 713158 | 713158 | 713158 | OUT CHAMBER 80FC | 2 | |
| 2 | 713170 | 713170 | 713170 | 713170 | 713170 | 713170 | IN MANIFOLD 80FC | 1 | |
| 3 | 713167 | 713167 | 713167 | 713167 | 713167 | 713167 | OUT MANIFOLD 80FC | 1 | |
| 5 | 804780 | 804780 | 804780 | 804780 | 804780 | 804780 | CENTER BODY ASSY DP-80-HD | 1 | |
| 5- 1 | 716248 | 716248 | 716248 | 716248 | 716248 | 716248 | AIR CHAMBER | 2 | |
| 5- 2 | 716256 | 716256 | 716256 | 716256 | 716256 | 716256 | BODY | 1 | |
| 5- 3 | 773066 | 773066 | 773066 | 773066 | 773066 | 773066 | THROAT BEARING | 2 | |
| 5- 4 | 716214 | 716214 | 716214 | 716214 | 716214 | 716214 | SHUTTLE (CS) | 1 | |
| 5- 5 | 773047 | 773047 | 773047 | 773047 | 773047 | 773047 | CENTER ROD GUIDE | 1 | |
| 5- 6 | 640023 | 640023 | 640023 | 640023 | 640023 | 640023 | O RING | 2 | |
| 5- 7 | 640133 | 640133 | 640133 | 640133 | 640133 | 640133 | O RING | 2 | |
| 5- 8 | 773040 | 773040 | 773040 | 773040 | 773040 | 773040 | GASKET | 2 | |
| 5- 9 | 773041 | 773041 | 773041 | 773041 | 773041 | 773041 | GASKET | 2 | |
| 5-10 | 640138 | 640138 | 640138 | 640138 | 640138 | 640138 | O RING | 2 | |
| 5-11 | 640007 | 640007 | 640007 | 640007 | 640007 | 640007 | O RING | 8 | |
| 5-12 | 683812 | 683812 | 683812 | 683812 | 683812 | 683812 | FLAT SOCKET | 12 | |
| 5-13 | 804784 | 804784 | 804784 | 804784 | 804784 | 804784 | VALVE BODY ASSY | 2 | |
| 5-13- 1 | 716244 | 716244 | 716244 | 716244 | 716244 | 716244 | VALVE BODY | 1 | |
| 5-13- 2 | 773042 | 773042 | 773042 | 773042 | 773042 | 773042 | GASKET | 2 | |
| 5-13- 3 | 716246 | 716246 | 716246 | 716246 | 716246 | 716246 | SEAT | 1 | |
| 5-13- 4 | 773425 | 773425 | 773425 | 773425 | 773425 | 773425 | BLOCK | 1 | |
| 5-13- 6 | 773426 | 773426 | 773426 | 773426 | 773426 | 773426 | GUIDE PLATE | 1 | |
| 5-13- 8 | 706612 | 706612 | 706612 | 706612 | 706612 | 706612 | SPRING INK | 1 | |
| 5-13- 9 | 686271 | 686271 | 686271 | 686271 | 686271 | 686271 | BALL | 1 | |
| 5-13-10 | 772934 | 772934 | 772934 | 772934 | 772934 | 772934 | PLUG | 2 | |
| 5-13-11 | 602300 | 602300 | 602300 | 602300 | 602300 | 602300 | TAPPING BOLT | 4 | |
| 5-13-12 | 610025 | 610025 | 610025 | 610025 | 610025 | 610025 | HEX. SOCKET HEAD SCREW | 1 | |
| 5-14 | 640134 | 640134 | 640134 | 640134 | 640134 | 640134 | O RING | 2 | |
| 5-15 | 611153 | 611153 | 611153 | 611153 | 611153 | 611153 | BOLT HEX FT | 4 | |
| 5-16 | 631420 | 631420 | 631420 | 631420 | 631420 | 631420 | SPRING WASHER M8 ZINC | 8 | |
| 5-17 | 631013 | 631013 | 631013 | 631013 | 631013 | 631013 | WASHER FLAT M8 ZINC DI | 8 | |
| 5-18 | 684987 | 684987 | 684987 | 684987 | 684987 | 684987 | WASHER | 12 | |
| 5-19 | 716249 | 716249 | 716249 | 716249 | 716249 | 716249 | RETAINER | 1 | |
| 5-20 | 713620 | 713620 | 713620 | 713620 | 713620 | 713620 | SPRING GUIDE | 2 | |
| 5-21 | 773067 | 773067 | 773067 | 773067 | 773067 | 773067 | BUSH | 4 | |
| 5-22 | 684537 | 684537 | 684537 | 684537 | 684537 | 684537 | SPRING | 2 | |
| 5-23 | 714446 | 714446 | 714446 | 714446 | 714446 | 714446 | TRIP ARM | 2 | |
| 5-24 | 700231 | 700231 | 700231 | 700231 | 700231 | 700231 | PIN | 2 | |
| 5-25 | 716216 | 716216 | 716216 | 716216 | 716216 | 716216 | RETAINER | 1 | |
| 5-26 | 611149 | 611149 | 611149 | 611149 | 611149 | 611149 | BOLT FT ZIN | 4 | |
| 5-27 | 686337 | 686337 | 686337 | 686337 | 686337 | 686337 | TAPPING SCREW | 2 | |
| 6 | 716253 | 716253 | 716253 | 716253 | 716253 | 716253 | CENTER BUSH | 2 | |
| 7 | 716252 | 716252 | 716252 | 716252 | 716252 | 716252 | CENTER ROD | 1 | |
| 8 | 711906 | 711906 | 711906 | 711906 | 711906 | 711906 | CENTER DISK 80-R | 2 | |
| 9 | 713371 | 713371 | 713371 | 713371 | 713371 | 713371 | CENTER DISK 80FC | 2 | |
| 10 | 771857 | 771704 | 771977 | 771858 | 771705 | 771801 | DIAPHRAGM 80 | 2 | |
| 11 | 771958 | 771996 | 772005 | 771999 | 771795 | 771998 | VALVE SEAT 80 | 4 | |
| 12 | 770559 | 770587 | 773174 | 770596 | 773144 | 770605 | BALL 80 | 4 | |
| 14 | 684322 | 684322 | 684322 | 684322 | 684322 | 684322 | BALL VALVE 3/4" | 1 | |
| 19 | 711912 | 711912 | 711912 | 711912 | 711912 | 711912 | BASE 80 | 2 | |
| 20 | 771402 | 771402 | 771402 | 771402 | 771402 | 771402 | FOOT RUBBER | 4 | |

Air Operated Double Diaphragm Pump

| | DP-80BFC-HD | DP-80BFN-HD | DP-80BFS-HD | DP-80BFE-HD | DP-80BFH-HD | DP-80BFV-HD | | | |
|----------|--------------|-------------|-------------|-------------|-------------|-------------|-----------------------|------|---------|
| | 854531 | 854532 | 854537 | 854533 | 854536 | 854534 | | | |
| REF. No. | PART No. | PART No. | PART No. | PART No. | PART No. | PART No. | DESCRIPTION | QTY. | REORDER |
| 21 | 683408 | 683408 | 683408 | 683408 | 683408 | 706144 | NUT SS | 2 | |
| 22 | 682740 | 682740 | 682740 | 682740 | 682740 | 682740 | WASHER M16 SS CONICAL | 2 | |
| 23 | 686161 | 686161 | 686161 | 686161 | 686161 | 686161 | BOLT | 20 | |
| 24 | 631014 | 631014 | 631014 | 631014 | 631014 | 631014 | WASHER FLAT | 4 | |
| 25 | 631917 | 631917 | 631917 | 631917 | 631917 | 631917 | WAVE WASHER | 28 | |
| 26 | 611204 | 611204 | 611204 | 611204 | 611204 | 611204 | BOLT | 16 | |
| 27 | 631015 | 631015 | 631015 | 631015 | 631015 | 631015 | WASHER FLAT | 16 | |
| 28 | 631918 | 631918 | 631918 | 631918 | 631918 | 631918 | WAVE WASHER | 16 | |
| 29 | 627014 | 627014 | 627014 | 627014 | 627014 | 627014 | NUT | 16 | |
| 33 | 611177 | 611177 | 611177 | 611177 | 611177 | 611177 | BOLT | 4 | |
| 34 | 627013 | 627013 | 627013 | 627013 | 627013 | 627013 | NUT | 4 | |
| 35 | 611149 | 611149 | 611149 | 611149 | 611149 | 611149 | BOLT | 4 | |
| 36 | 682276 | 682276 | 682276 | 682276 | 682276 | 682276 | NUT W/ FLANGE | 4 | |
| 40 | 640078 | 640078 | 684124 | 684124 | 640078 | 642078 | O RING | 4 | |
| 42 | 686164 | 686164 | 686164 | 686164 | 686164 | 686164 | BOLT | 4 | |
| 44 | 804697 | 804697 | 804697 | 804697 | 804697 | 804697 | MUFFLER | 2 | |
| KIT | K80-MC | K80-MN | K80-MS | K80-ME | K80-MH | K80-MV | LIQUID SIDE | | |
| KIT | K80-AM-DP-HD | | | | | | AIR MOTOR | | |

General Tools:

- Socket wrench - 24mm
- Hexagonal box wrench - 5mm, 6mm
- Small crowbars - 2 (B_C, B_N, B_E, B_V)
- Open-end wrenches - 19mm, 24mm
- Phillips head screw driver

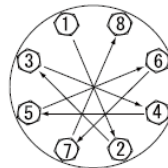
Special Tools:

- Socket (804129) for a guide to remove the throat bearing (sold separately)

Miscellaneous:

- Assembly Oil - Turbine oil none additional class 1 (equivalent to ISO VG32 grade)
- Nuts - M16 x 1.5
- Thread locker
- Urea grease grade (NLGI) No. 2, Shell Alvania Grease S1

Torque Requirements:



Tightening torque for center rod and out chambers.

Center Rod 43 ft-lbf {60 N-m}
Out Chambers 29 ft-lbf {40 N-m}

Tightening torque for manifold retainer bolts.

BFC/N/S/E/H/V-HD 18 ft-lbf {25 N-m}

Customer Notes

Model #: _____
 Description: _____
 Serial #: _____
 Date Installed: _____
 Department Location: _____
 Tag/Project: _____